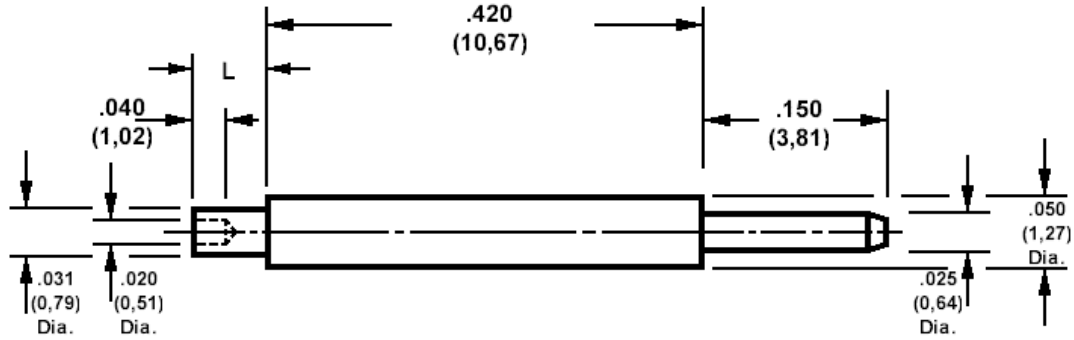


460-2626 Swage mount, .025 (0,64) diameter pins

Recommended mounting hole .033 (0,84) ± .002 (0,05), #65 drill



How to order code

460-2626-XX-YY-00

Basic Part No XX= L dimension, YY = Plating finish

| DIMENSIONS (XX) | | | |
|-------------------|------|-------------|---------------------|
| Basic Part Number | (XX) | L | For Board Thickness |
| 460-2626 | -01 | .051 (1,30) | .031 (0,79) |
| | -02 | .081 (2,08) | .061 (1,57) |

| MATERIALS | | | |
|-----------|----------|------------------|-------------------------|
| Component | Material | Finish (-03) | Finish (-04) |
| Pin | Brass | Gold over Nickel | Electro-tin over copper |

| SWAGE TOOLING | |
|-----------------------------|-------------------|
| Recommended Swaging Tools:- | |
| Anvil | 435-6527-01-00-00 |
| Flare Punch | 435-6691-01-00-00 |